

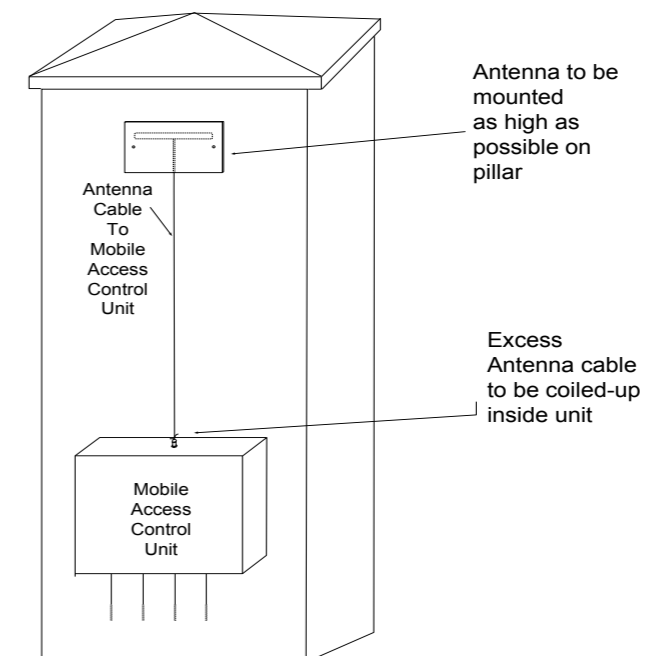
Mobile Entry

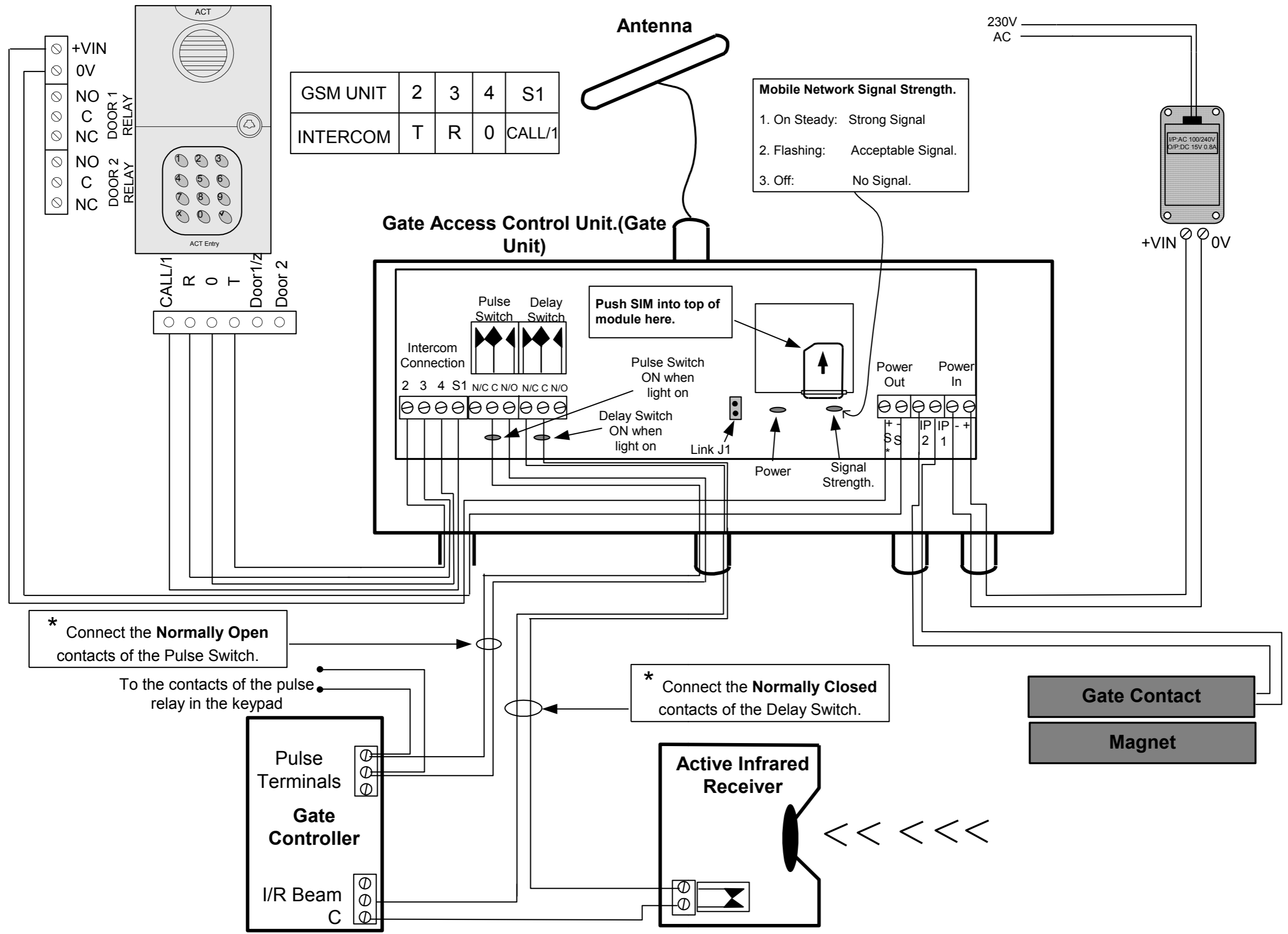
Wiring and Installation Manual Intercom with Keypad – ACT Entry

Installing the Mobile Access Control Unit

1. These instructions assume that the IP65 Waterproof Enclosure is being used. If not then the standard (non waterproof housing) must be enclosed in an IP65 waterproof housing.
2. Mount the Mobile Access control unit on a pillar close to the main gate controller.
3. Mark the wall for holes for mounting the enclosure.
4. Drill 4 holes and mount the enclosure.
5. Mount the antenna high up the pillar wall using two screws to hold the antenna housing. See diagram below.
6. Pull any excess antenna cable back into the mobile access enclosure.
7. Mount the Intercom on the gate side of the entrance.
8. Connect the unit as shown in the Wiring Diagram on the following pages.

Installing Antenna & Mounting Plate





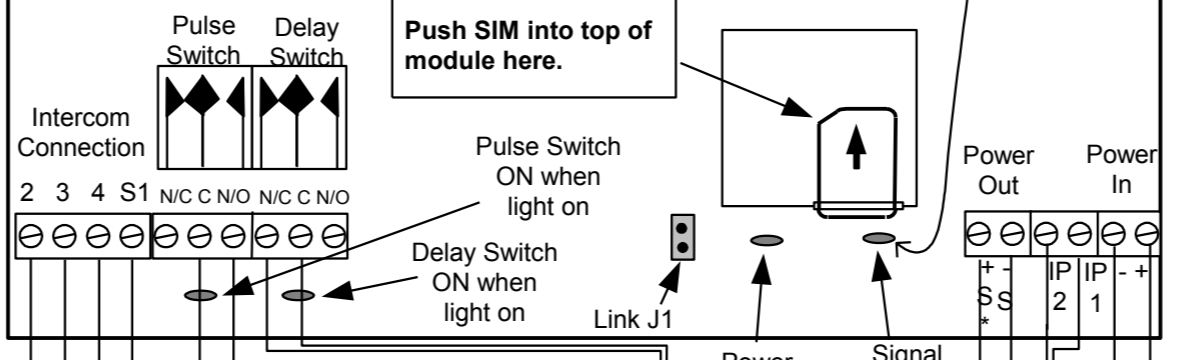
GSM UNIT	2	3	4	S1
INTERCOM	T	R	0	CALL/1

Mobile Network Signal Strength.

1. On Steady: Strong Signal
2. Flashing: Acceptable Signal.
3. Off: No Signal.

Gate Access Control Unit.(Gate Unit)

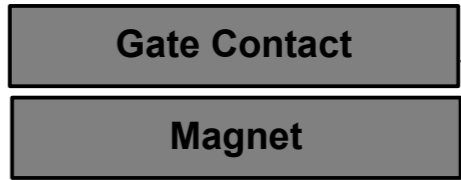
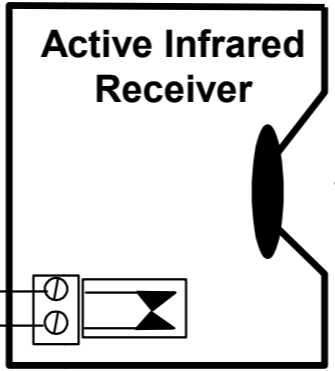
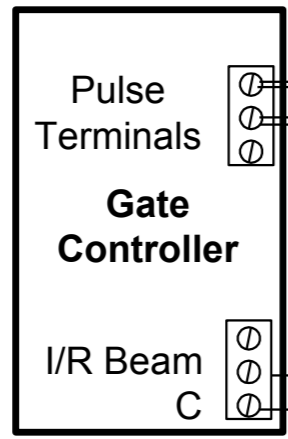
Push SIM into top of module here.



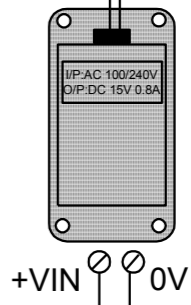
* Connect the **Normally Open** contacts of the Pulse Switch.

To the contacts of the pulse relay in the keypad

* Connect the **Normally Closed** contacts of the Delay Switch.



230V AC



+VIN 0V