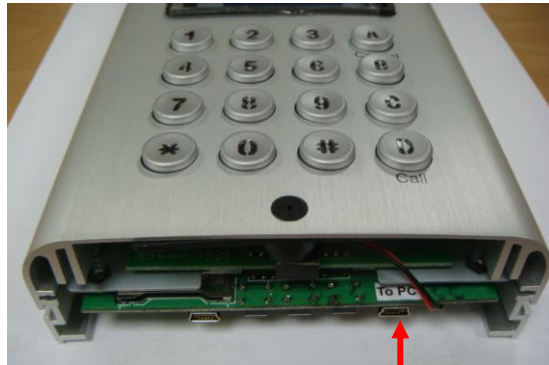


2T-Technology

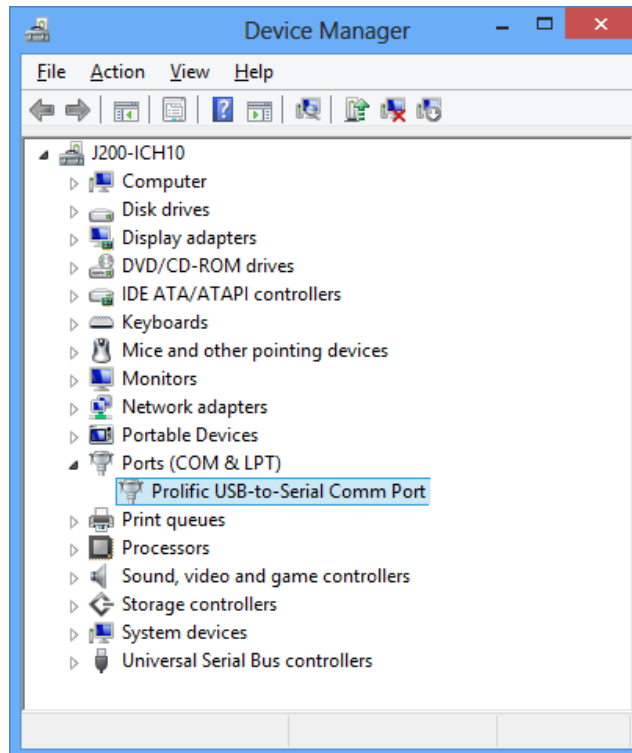
Using the PC software with the Voyager Digital Intercom. Installing the USB Driver:

1. Install the USB driver from the supplied disk, wait till installation is complete.
2. Plug in the USB cable between the PC and the Voyager Digital Intercom (To the right of the unit).

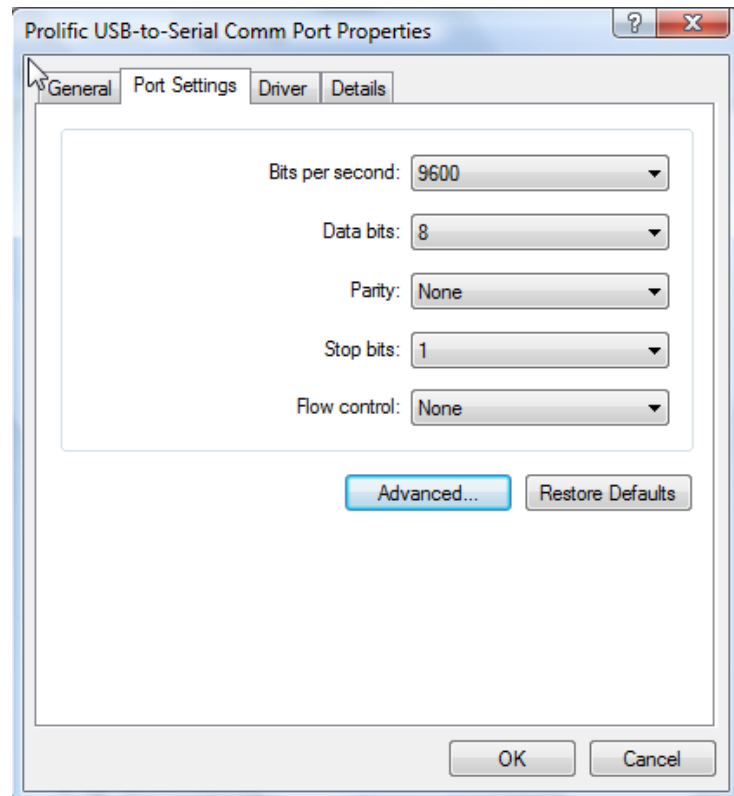


To PC USB port

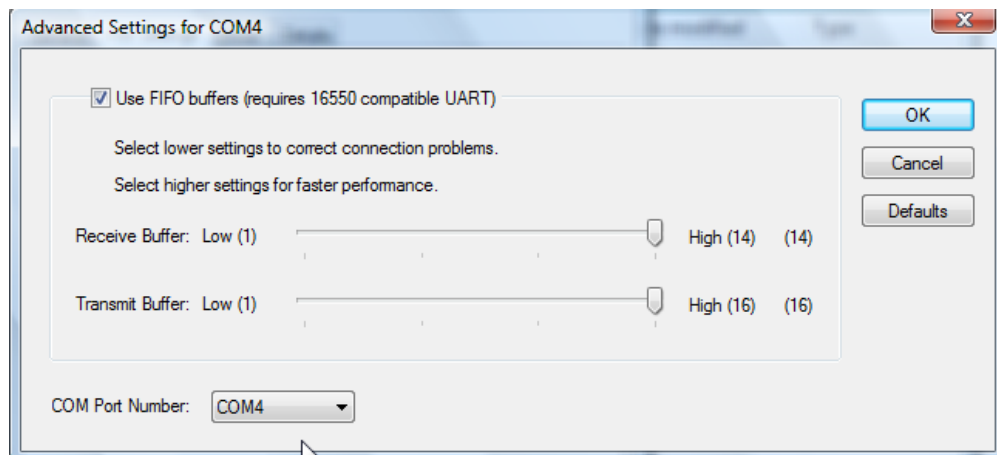
3. Open Device manager (this can be found by clicking on the windows button and selecting Control Panel then Select System then select Device Manager).
4. Select ports (Com & LPT) from device manager.
5. Double click “prolific USB-to-Serial Comm Port in ports (Com & LPT).



6. Select port settings.

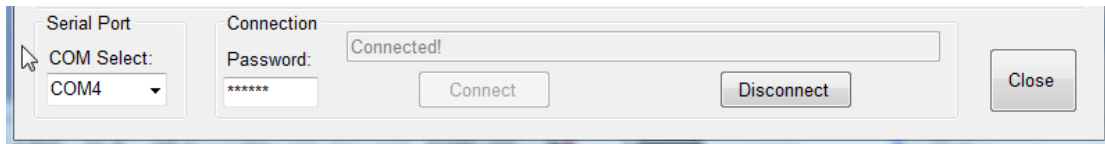


7. Select advanced in port settings, in the bottom left corner you will see "COM Port Number" take note of this as you will need it.



Using the software:

1. Run the software from the disk or copy it to your PC and run it.
2. When the software has loaded, go to the bottom left “COM Select” and select the port number, ie COM4, then move across from this to the “Password:” put the unit password in here (default password is 123456) then press Connect.



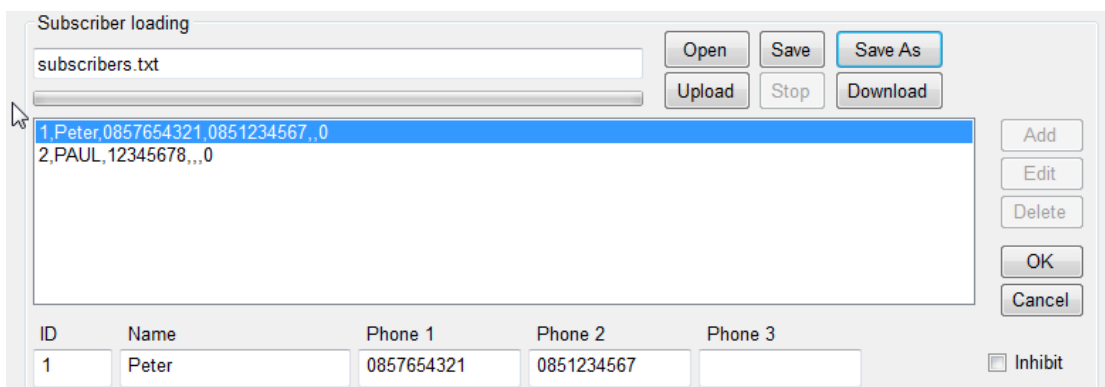
3. Now the Voyager Digital Intercom will display PC Connected and the software should also show Connected above the Connect button.

Using the Program:

1. When the Unit has connected, all of the setting will be automatically populated except users or subscribers.
2. If the Unit has been programmed with users you can download these to the program and you will be able to add or edit users.
3. Press the “Download” button and wait for the box with “Download Complete”, press “Ok”.

To add or edit users:

1. To add a user. Select “Add”, fill in the users details and select “Ok”, then press “Upload” to upload the new user/users to the Unit.



2. To edit users select the user you wish to edit and press “Edit”, when finished select “Ok”, then press “Upload” to upload the edited user/users to the Unit.

Create a backup file of users:

1. To create a file with users, go to Subscribers.
2. Select “Save As”, select where you want to save the file then put in the file name ie subscribers.txt, then select “Save”.
3. To load a backup file, go to “Open”, chose the file to open ie “subscribers.txt”, click “Open”.

System Setting Menu

Making changes to System Settings:

In System Settings Menu you can change many of the features of the Voyager Digital Intercom. For example you can change the Manager Phone Number, Calling Time, Speaker volume level etc.

When making changes to the System Setting menu you must press the “Set” button to implement and upload the change/changes to the Unit.

The screenshot shows a web-based configuration interface for a Voyager Digital Intercom. The interface is divided into several sections:

- System Setting:** Contains various configuration options with input fields and checkboxes:
 - Manager Phone Number: 0851234567
 - Open Door Password: Enabled 123456
 - Caller ID Opening: Enabled
 - Door Open Time: 3 (1~99)
 - Door Relay Type: Normal Open
 - Ringer: Enabled
 - Calling List: Enabled
 - Talking Time Limit: 30 (10~180)
 - Calling Time: 25 (20~99)
 - SMS control: Enabled
 - Microphone: 2 (1~9)
 - Speaker: 2 (1~8)
- Firmware Version:** 4.22E, with a Load Default button.
- GSM Module:** Ver.: 1575B18SIM5215E, IMEI: 359769033434330
- Greetings:** Radio buttons for Enter Flat Number then Call (selected), Welcome, and User Defined as below. Below are input fields for Line 1, Line 2 (Greetings), and Line 3.
- 2G/3G Status:** Radio buttons for 2G and 3G (selected), with a field for 04 and a Set button.

If making changes to Door Open Time, Talking Time Limit, Calling Time please note that these are in seconds, so if Door Open Time was 6 it would stay open for 6 seconds.

If making changes to Microphone or Speaker the number represents a level, so 1 would be low and 9 high. So if the speaker was set at 8 the speaker would be louder than if it was set at 2.

System Setting options

Manager Phone Number: This is the phone number that the Unit can be programmed from, it can be changed by simply deleting the current number (if a number exists) and putting a new number in, then press the “Set” button to implement and upload the change to the Unit.

Open Door Password: When enabled, the door will open when the correct password is entered (in this case 123456). The password can be changed by deleting the current password beside Enable and putting a new password in the box, then pressing “Set” to implement and upload the change to the Unit.

Caller ID Opening: When enabled, phone numbers in the Subscribers list will be recognised when they ring the unit and the door will open.

Door Open Time: This is the duration in seconds the door will stay open for.

Door Relay Type: There is two options here either Normal Open or Normal Close. If this is set to Normal Open this means the relay will be open until activated, if set to Normal Close then the relay will be closed until activated.

Ringer: When enabled and there is an incoming call to the unit there will be a ringing noise. If disabled then the unit will be silent while there is an incoming call.

Calling List: When enabled, gives the option to view a list of apartment numbers with the name of the person in that apartment and the ability to call from that list.

Talking Time Length: This is the length of time that a call will stay open for, ie if set to 30 seconds, then when a call is made from the unit to a subscriber/user and answered the call will stay open for 30 seconds then hang up. This can be increased or decreased.

Calling Time Length: This is the amount of time the unit will attempt to call a phone before hanging up and going to the next phone number in the list. For example, if set to 30 seconds the unit will first attempt to ring the first number in the list, after 30 seconds if there was no answer then the unit would try the second number in the list, again if no answer after 30 seconds the unit would ring the third number in the list.

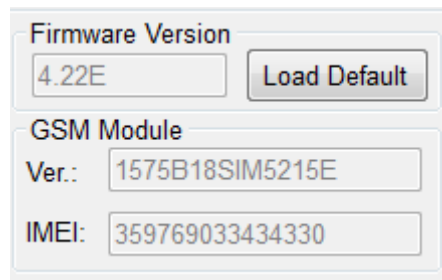
SMS Control: If enabled, allows the unit to be controlled by text message commands.

Microphone: Controls the volume level of the microphone on the unit.

Speaker: Controls the volume level of the speaker on the unit.

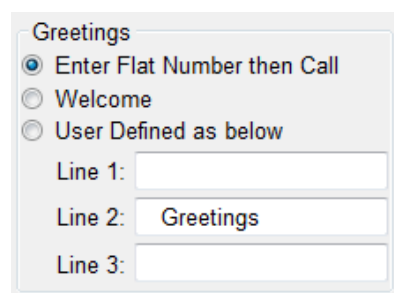
2G/3G Status: This indicates if the unit is on 2G or 3G network.

Firmware Version: Shows current firmware version of the unit.



GSM Module: Shows the unit Version and the units IMEI number.

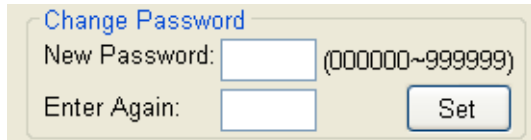
Greetings: This is the message seen on the screen of the unit, it can be changed by picking one of the pre-programmed messages or by putting in your own message. When making changes make sure to press the "Set" button to implement and upload the change to the unit.



Other Options:

Changing the main password:

Enter a new password in the “New Password” box then retype the password in the “Enter Again” box. Press “Set” button to change the password.



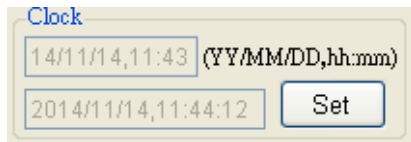
Change Password

New Password: (000000~999999)

Enter Again:

Setting up the Clock:

Simply press the “Set” button to update the unit clock with the PC clock.

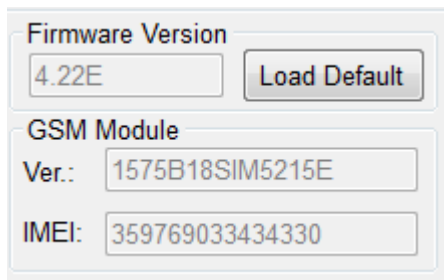


Clock

(YY/MM/DD,hh:mm)

Factory resetting the unit:

To factory reset the unit press the “Load Default” button. This will reset all the System Settings.



Firmware Version

GSM Module

Ver.:

IMEI: